

MOXA7E

Portable Biometric Enrollment Terminal

MOXA7E is a mobile multi fingerprint scanner with an intuitive ergonomic design. The fingerprint reader is suitable for use in various sectors and applications as it is compact and powered by sophisticated biometric technology from Mantra Softech.

Mantra Softech is a Global Hi-Tech Manufacturer
of Biometric Products and Solutions



Android OS



10 Finger Capture



Camera



3G / 4G

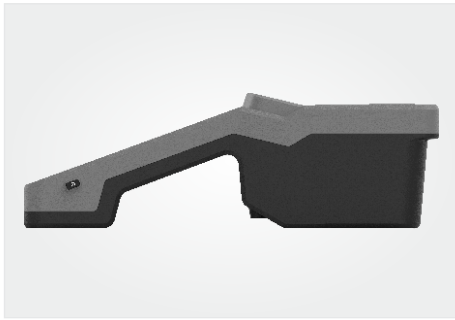
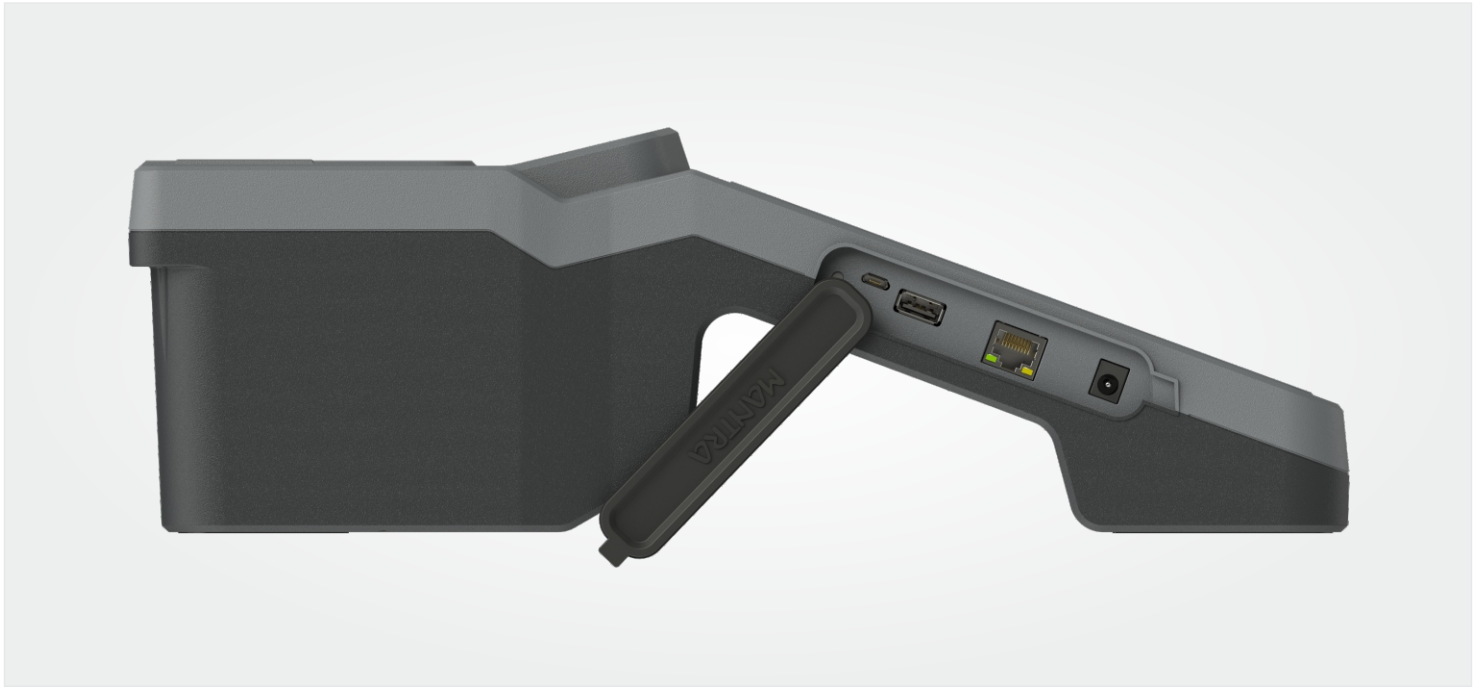


Inbuilt WiFi



LAN





Introduction

The MOXA7E is an FBI FAP 60 certified fingerprint scanner built for the toughest and most challenging identity management projects. The portable unit's 2.0GHz Quad-Core processor, 4GB RAM, 32GB flash memory and long battery life make it ideal for remote and all possible large-scale identity management applications.

The MOXA7E employs the most advanced optical technology that allows high-speed fingerprint image capturing and seamless image processing, ensuring the best image quality for slap fingerprints. And it features a state-of-the-art, scratch-resistant touch screen interface powered by Android OS.

This device is an absolutely ideal choice for all your civil, criminal identification, and border security applications, such as voter registration, national ID enrollment, applicant background checks, airport security, etc.

Features

OPERATING SYSTEM

GMS Certified Android OS / Customized GMS Android OS (optional)

BACK CAMERA

8MP AF camera with High brightness Flash LED

AUDIO

High-Quality 1W Speaker for Announcements

ETHERNET

Ethernet 10/100

LIGHTWEIGHT

One of the few enrolment tablets weighing less than 2.2kg

SECURITY

High security level for captured and/or transmitted data.

QUALITY & FLEXIBILITY

Built for harsh conditions & multiconfiguration device

VERY HIGH CAPACITY BATTERY

long battery storage to manage one-full working day

At A Glance

Hardware & System

CPU	: ARM Cortex A53 @2.0GHz Quad Core Processor
Memory	: 4GB RAM + 32GB eMMC
Micro SD Card	: Micro SD slot supporting up to 256 GB memory card
LCD	: 7" IPS LCD with resolution (1024 X 600) with 16M colors
Touch	: Scratch Resistant Multi-Point Capacitive Touch Screen
Operating System	: GMS Certified Android OS / Customized Android OS (optional)
Back Camera	: 8MP AF camera with High brightness Flash LED
Audio	: High-Quality 1W Speaker for Announcements
Control Buttons	: 1x Power On/Off, 1x Reset Key
Operating / Storage Temperature	: 0 Deg - 45 Deg C
Operating Humidity	: 10%-90% RH (Non-Condensing)
Dimensions (in mm)	: 370 x 141 X 121 mm
Weight	: Approx 2.2kg (Depend Upon Configuration)
Certifications	: CE, RoHS, BIS, IP65

Fingerprint Sensor

Fingerprint Sensor Type	: Optical Scratch Free Sensor
Pixel Resolution	: 500 DPI +/- 1%
Capturing Format	: Flat Four fingers & Two thumbs
Active Platen Area	: 3.2 x 3.0 Inch (81.2 x 76.2 mm)
Finger Image Pixels	: 1600 x 1500 Pixels
Pixel Depth	: 8 Bits/Pixel (256 Gray Level)
Capture mode	: Auto capture with built-in quality check (incorporates NIST quality considerations)
Interface	: USB 2.0(High speed), USB-IF Certified
LED Indicators	: Power, Status, and fingerprint image quality
ESD protection	: Contact Discharge: +/- 4kV, Air Discharge: +/- 8kV
Signal to noise ratio	: Both White & Black SNR >= 125
Platen Area Hardness	: 9H compliant, Tested as per ASTM D3363
Platen Area Abrasion	: 175g, 400 cycles, Abrasion test compliant as per ASTM F 2357
Operating Condition	: Under Direct Sunlight up to 100K LUX
Biometric Data Interchange Format	: ISO/IEC 19794-4:2005 & 2011 for Image Template, WSQ3.1, JPEG2000
Certifications	: CE & FCC Part 15B class A, KC Certified, EN/IEC 62368-1, IS 13252 (Part 1), UL Certified, STQC Certified, RoHS, FBI's IAFIS Appendix-F & Mobile ID FAP60, IP65

At A Glance

Fingerprint Sensor	Software Features	: NIST compliance WSQ compression module : NIST compliance NFIQ Quality check : Segmentation of flats into single fingerprint images
Interfaces	4G/3G/2G	: 2G GSM/GPRS/EDGE : 850/900/1800/1900 : 3G WCDMA : B1/B2/B5/B8 : 4G FDD: B1/B3/B5/B7/B8/B38/B40/B41 : 4G TDD: All Band
	Wi-Fi 2.5GHz & 5.0 GHz	: IEEE 802.11 a/b/g/n/ac with Flex antenna
	Ethernet	: Ethernet 10/100 Mbps
	Bluetooth	: BT & BLE 5.0 with Flex Antenna
	GPS	: 16 Channel NMEA Compliant with Flex Antenna, AGPS Supported
	SIM Socket	: 2 x Micro SIM Slot
	DC Jack	: 1 x DC Power Input
	Micro USB	: 1 x Micro USB Port for PC Connection as debug port
	SAM Slot (optional)	: 2 x SAM Slot (As per ISO7816 standard)
	USB	: 1 x USB2.0 Type-A
Electrical	Power Adaptor	: Input AC: 90~265V, 50Hz ; Output DC: 5V/3A
	Battery Pack	: Li-Ion 9000 mAH Rechargeable & Replaceable Battery

MANTRA

www.mantratec.com



MANTRA

www.mantratec.com

Support : servico@mantratec.com

Sales : sales@mantratec.com

Copyrights Mantra Softech (India) Pvt Ltd. All Rights Reserved.



Make In India