

MOXA7E

Portable Enrollment Fingerprint Device

MOXA7E is a mobile multi fingerprint scanner with an intuitive ergonomic design. The fingerprint reader is suitable for use in various sectors and applications as it is compact and powered by sophisticated biometric technology from Mantra Softech.

Mantra Softech is a Global Hi-Tech Manufacturer
of Biometric Products and Solutions



Android OS



10 Finger Capture



Camera



3G / 4G

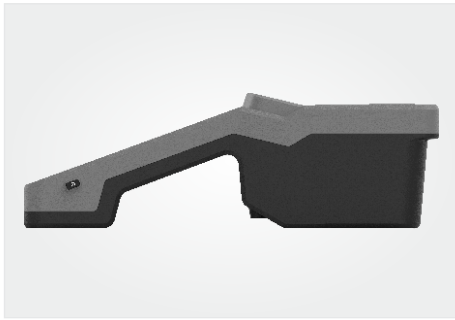


Inbuilt WiFi



LAN





Introduction

The MOXA7E is an FBI FAP 60 certified fingerprint scanner built for the toughest and most challenging identity management projects. The portable unit's 1.5GHz Quad-Core processor, 2GB RAM, 16GB flash memory and long battery life make it ideal for remote and all possible large-scale identity management applications.

The MOXA7E employs the most advanced optical technology that allows high-speed fingerprint image capturing and seamless image processing, ensuring the best image quality for slap fingerprints. And it features a state-of-the-art, scratch-resistant touch screen interface powered by Android OS.

This device is an absolutely ideal choice for all your civil, criminal identification, and border security applications, such as voter registration, national ID enrollment, applicant background checks, airport security, etc.

Features

OPERATING SYSTEM

GMS Certified Android OS / Customized GMS Android OS (optional)

BACK CAMERA

8MP AF camera with High brightness Flash LED

AUDIO

High-Quality 1W Speaker for Announcements

ETHERNET

Ethernet 10/100

LIGHTWEIGHT

One of the few enrolment tablets weighing less than 2.2kg

SECURITY

High security level for captured and/or transmitted data.

QUALITY & FLEXIBILITY

Built for harsh conditions & multiconfiguration device

VERY HIGH CAPACITY BATTERY

long battery storage to manage one-full working day

At A Glance

Hardware & System

CPU	: ARM Cortex A53 @1.5GHz Quad Core Processor
Memory	: 2GB RAM + 16GB eMMC
Micro SD Card	: Micro SD slot supporting up to 64 GB memory card
LCD	: 7" IPS LCD with resolution (1024 X 600) with 16M colors
Touch	: Scratch Resistant Multi-Point Capacitive Touch Screen with 6H Toughen Glass
Operating System	: GMS Certified Android OS / Customized Android OS (optional)
Back Camera	: 8MP AF camera with High brightness Flash LED
LED Indicators	: Power On/Off, Battery Charging Status
Audio	: High-Quality 1W Speaker for Announcements
RTC	: Yes
Control Buttons	: 1x Power On/Off, 1x Reset Key
Operating / Storage Temperature	: 0 Deg - 50 Deg C
Operating Humidity	: 10%-90% RH (Non-Condensing)
Dimensions (in mm)	: 370 x 141 X 121 mm
Weight	: Approx 2.2Kg (Depend Upon Configuration)
Certifications	: CE, RoHS, IS 13252 (Part 1)

Fingerprint Sensor

Fingerprint Sensor Type	: Optical Scratch Free Sensor
Pixel Resolution	: 500 DPI +/- 1%
Platen Area	: 3.5 x 3.2 in. (90 x 81 mm)
Capturing Format	: Flat Four fingers & Two thumbs
Active Platen Area	: 3.2 x 3.0 Inch (81.2 x 76.2 mm)
Finger Image Pixels	: 1600 x 1500 Pixels
Pixel Depth	: 8 Bits/Pixel (256 Gray Level)
Capture mode	: Auto capture with built-in quality check (incorporates NIST quality considerations)
Biometric Data Interchange Format	: ISO 19794-2:2011 for minutiae & ISO 19794-4:2011 for Image Template, WSQ3.1, JPEG2000
Certifications	: CE & FCC Part 15B class A, EN/IEC 62368, IS 13252 (Part 1), RoHS, FBI's IAFIS Appendix-F & Mobile ID FAP60
Software Features	: NIST compliance WSQ compression module : NIST compliance NFIQ Quality check : Segmentation of flats into single fingerprint images

At A Glance

Interfaces	4G/3G/2G	: 2G GSM/GPRS/EDGE:850/900/1800/1900 : 3G WCDMA:B1/B2/B5/B8 : 4G FDD: B1/B3/B5/B7/B8/B38/B40/B41 : 4G TDD: All Band
	Wi-Fi 2.5GHz & 5.0 GHz	: IEEE 802.11 b/g/n with Flex antenna
	Ethernet	: Ethernet 10/100 Mbps
	Bluetooth	: BT + BLE 4.2
	GPS	: 16 Channel NMEA Compliant with Flex Antenna, AGPS Supported
	SIM Socket	: 2 x SIM Socket
	DC Jack	: 1 x DC Power Input
	Micro USB	: 1 x Micro USB Port for PC Connection as debug port
	SAM Slot (optional)	: As per ISO7816 standard
	USB	: USB2.0 Type A (for pendrive connection)
Electrical	Power Adaptor	: Input AC: 90~265V, 50Hz ; Output DC: 12V/2A
	Battery Pack	: Li-Ion 9600 mAH Rechargeable & Replaceable Battery

MANTRA

www.mantratec.com



MANTRA

www.mantratec.com

Support : servico@mantratec.com

Sales : sales@mantratec.com

Copyrights Mantra Softech (India) Pvt Ltd. All Rights Reserved.



Make In India