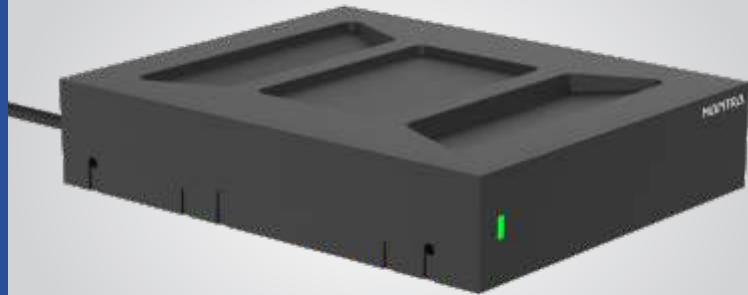




Contact Smart Card Reader

Model : MSCR100

Mantra Softech is a Global Hi-Tech Manufacturer of Biometric Products and Solutions. We offer a Wide Range of Products in Biometric and RFID Industry.



Introduction

MSCR100 is an ISO 7816-compliant built-in SAM (Secure Access Module) slot, which can be used with a SAM card for high-level security in contact transactions.

It has additional features like USB firmware upgradability and extended APDU support. Lastly, MSCR100 uses high-speed communication for contact cards (maximum of 848 kbps), which makes it suitable for highly demanding applications. It is fully compliant with PC/SC and CCID compliant and supports various operating systems such as Windows, Linux, BOSS OS and Mac.

MSCR100 supports All types of card supporting ISO 7816.

Features

- ◆ Secure Access Module in form of 3.5" Floppy Drive Form Factor
- ◆ USB Bus Powered; device connected to USB of Motherboard
- ◆ Contact Smart Card Interface supports ISO 7816
- ◆ USB 2.0 Full Speed Interface
- ◆ CCID Compliance
- ◆ Card detection alert for user

Smart Card Reader:

- ◆ Read/write speed up to 848 kbps
- ◆ Supports all types of ISO 7816 Compliant Contact Card
- ◆ **Application Programming Interface** : Supports PC/SC
- ◆ **Peripherals** : User-controllable bi-color LED

Can Perform

- ◆ Mutual Authentication
- ◆ Secure Messaging
- ◆ Purse MAC Computation
- ◆ Secure Key Injection
- ◆ Key Diversification

At a Glance

Device details	Reader Form Factor	: 3.5" Floppy Disk Drive
	SAM Slot	: Internal
	Wireless Operating Frequency	: 13.56MHz
	Protocol Supported	: ISO 7816 Class A, B and C
	Status Indicator	: Bi-Color LED
	Host Interface	: USB 2.0 or 3.0 as per motherboard
	PC-Linked Mode	: PC/SC
	Smart Card Interface Support	: ISO 7816 Class A, B and C
Electrical Characteristics	Power	: USB Bus Powered
	Operating Voltage	: 5V +/- 5% Vdc
	Operating Current	: 25 mA
	Stand by Current	: 20 mA
Environmental Characteristics	Operating Temperature	: 0 to 50 °C
	Storage Temperature	: (-20) to 70 °C
	Humidity (Operating / Storage)	: 10% - 90% (Non condensing)
Compliant to Following Standard	Environmental, Health and Safety	: RoHS
	CE Marking	: YES
	Operating System	: Windows x86 & x64, BOSS OS, Linux
Mechanical Details	Dimension	: 125 mm (L) x 101 mm (W) x 25.5 mm (H)
	Weight	: Approx 140 gm

MANTRA

www.mantratec.com



MANTRA

www.mantratec.com

Support : servico@mantratec.com

Sales : sales@mantratec.com

Copyrights Mantra Softech (India) Pvt Ltd. All Rights Reserved.