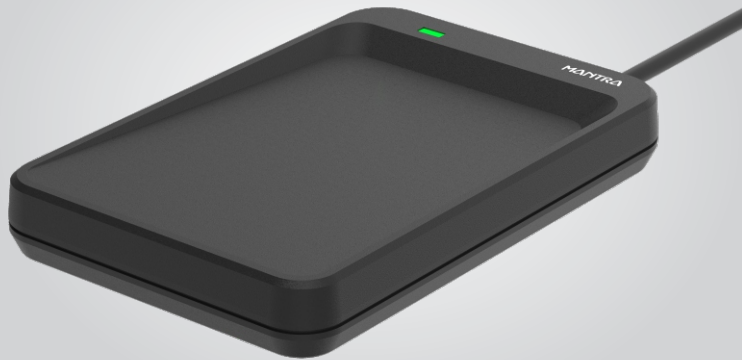


Contactless Smart Card Reader

Model : MSCR200

Mantra Softech is a Global Hi-Tech Manufacturer of Biometric Products and Solutions. We offer a Wide Range of Products in Biometric and RFID Industry.



Introduction

MSCR200 Smart Card Reader with new and modern technology. This compact smart card reader brings together sophisticated technology and modern design to meet the rigorous requirements of smart card-based applications.

The MSCR200 Contactless Reader based on 13.56 MHz technology for fast and easy integration into embedded systems. It is a plug-and-play device that does not require any driver installation.

It also features a USB Full Speed interface and a smart card read/write speed of up to 848 Kbps and has a card reading distance of up to 50 mm.

It is fully compliant with PC/SC and CCID compliant and supports various operating systems such as Windows, Linux, BOSS OS and Mac. MSCR200 supports All types of card supporting ISO 14443.

With its sleek, stylish design and powerful core, the MSCR200 is the ideal peripheral for your smart card applications.

Features

- ◆ USB 2.0 Full Speed Interface
- ◆ USB Bus Powered Device
- ◆ CCID Compliance
- ◆ Table top form factor
- ◆ Card detection alert for user
- ◆ Supports PC/SC
- ◆ User-controllable bi-color LED
- ◆ User-controllable buzzer

Smart Card Reader:

- ◆ Read/write speed up to 848 kbps
- ◆ Built-in antenna for contactless tag access, with card reading distance of up to 50 mm (depending on tag type)
- ◆ Supports all types of ISO 14443 Compliant Contactless Card
- ◆ Built-in anti-collision feature (only 1 tag is accessed at any time)



At a Glance

Sensor Characteristics	Reader Form Factor	: Reads the card in any alignment when it is placed on the reader
	Wireless Operating Frequency	: 13.56MHz
	Protocol supported	: ISO 14443 A/B
	Operating Distance	: Up to 50 mm (Depends on type of the Card)
	Card Alignment	: Horizontal while interacting with Card
	Status Indicator	: Bi-Color LED
	Buzzer	: Indication for card detection
	Host Interface	: USB 2.0 Full Speed
	Smart Card Interface Support	: ISO 14443 A/B
	PC-Linked Mode	: PC/SC
Electrical Characteristics	Power Supply	: Bus Powered
	Operating Voltage	: 5V +/- 5% Vdc
	Operating Current	: 140mA-200 mA (Maximum Rated Value; Subject to Type of Card)
	Stand by Current	: 60mA-100 mA (Intermittent RF Transmission)
	Interface	: PC/SC
Environmental Characteristics	Operating Temperature	: 0 to 50 °C
	Storage Temperature	: -20 °C to 70 °C
	Humidity (Operating / Storage)	: 10% - 90% (Non condensing)
Compliant to Following Standard	Environmental, Health and Safety	: RoHS
	CE Marking	: YES
	Operating System	: Windows x86 & x64, BOSS OS, Linux
Mechanical Details	Dimension	: 106 mm (L) x 70 mm (W) x 14.5 mm (H)
	Weight	: Approx 90 gm

MANTRA

www.mantratec.com



MANTRA

www.mantratec.com

Support : servico@mantratec.com

Sales : sales@mantratec.com

Copyrights 2021 Mantra Softech (India) Pvt Ltd. All Rights Reserved.