

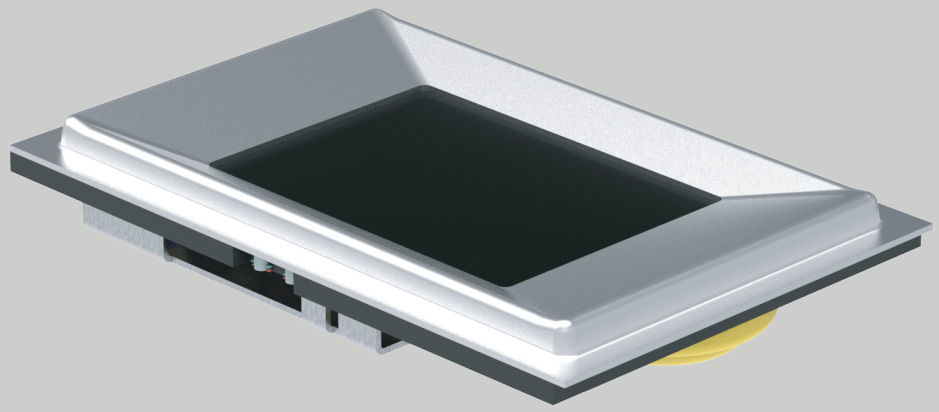
Capacitive Fingerprint Scanner

Model : MAPRO CX | Module : MOPv6.0

MANTRA

Benefits

- Scratch resistant
- Higher accuracy
- Easy integration
- Best image quality
- Easy-to-use



Features



Device securely sign the biometric data



MINE compliance embedded extractor



Lowest FAR and FRR



Supports multiple devices



500 DPI capacitive fingerprint sensor



High speed USB 2.0 interface with plug and play



Scratch free sensor surface



STOC/Aadhaar certified fingerprint sensor



FAP10 fingerprint device

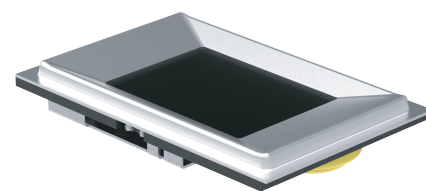


Support Aadhaar auth API specification V2.0

Capacitive Fingerprint Scanner

Model : MAPRO CX | Module : MOPv6.0

Mapro CX is a secure and reliable fingerprint scanner for precise identification, verification and authentication process. Mapro CX captures high-resolution fingerprint images with the most rugged and advanced capacitive sensor. The device supports MINEX compliance embedded extractor and a FAP10 compliant fingerprint device.



At a Glance

Sensor Characteristics

Parameters	Specification
Fingerprint Sensor	: Advanced Capacitive Sensor
Spatial Resolution	: 500 DPI +/- 5 %
Sensing Area	: 16 mm x 18 mm
Image Size	: 316 x 354 Pixels
Image Grayscale	: 256 (8 - Bit Gray Level)
Image Capture Speed (Continuous)	: 5 FPS
Maximum Acquisition Time (Placement to Template)	: < 2 sec
Approx Dimensions (L x W x H)	: 35 x 24 x 6.5 mm
Approx Weight	: 0.007 Kg

Electrical Characteristics

Parameters	Specification
Operating Voltage	: 5V +/- 5% (USB Powered Device)
Operating Current (max)	: 80 mA
Stand by Current (max)	: 50 mA
Interface	: USB 2.0 / Serial TTL

Environmental Characteristics

Parameters	Specification
Operating Temperature	: 0 to 45 degC
Storage Temperature	: 0 to 50 degC
Humidity (Operating / Storage)	: < 90% RH, Non-condensing

Compliant to Following Standard

Parameters	Specification
Biometric Data Interchange Format	: ISO 19794-2 for minutiae & ISO 19794-4 for Image Template
Environmental, Health and Safety	: RoHS Certification
BIS	: IS 13252 (Part 1)
Safety	: IEC60950
EMI / EMC Compliance	: CE & FCC Class A
*FBI PIV Certification	: Compliance
*STQC Certification	: Yes
IP Rating	: IP67
Device Driver	: WHQL Certified with Unique Serial Number
OS Supports	: Win XP, Win 7, Linux (32 bit & 64 bit)

*Applied for certification