

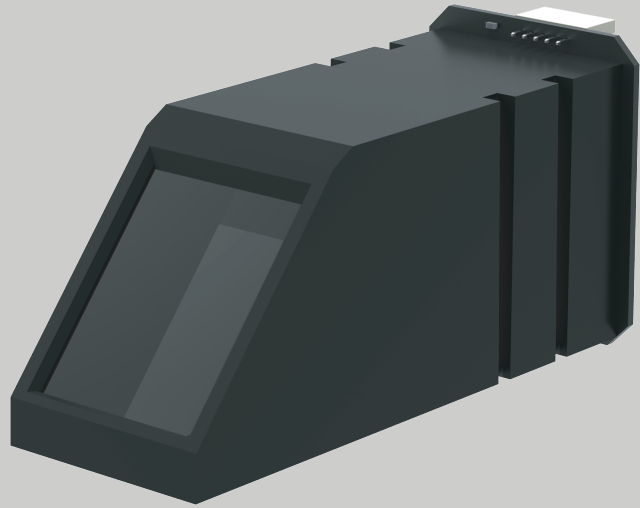
Optical Fingerprint Scanner

Model : MFS500 | Module : MOPv2.0

MANTRA

Benefits

- Easy to integrate
- Offers high accuracy
- Easy to use
- Rapid capturing
- High speed interface



Features



Supports multiple devices



Scratch free sensor surface



Device securely sign the biometric data



High speed USB 2.0 interface with plug and play



Support Aadhaar auth API specification V2.0



Lowest FAR and FRR



500 DPI optical fingerprint sensor



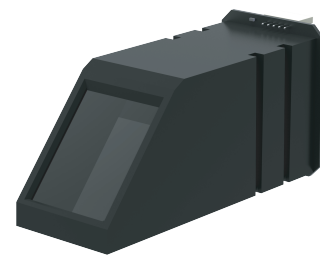
STQC/Aadhaar certified fingerprint sensor



FAP10 fingerprint device

Optical Fingerprint Scanner

Model : MFS500 | Module : MOPv2.0



MFS500 is a high-quality fingerprint scanner utilized for accurate fingerprint authentication process. MFS500 is devised with an optical scratch free sensor for efficient recognition of poor quality fingerprint. MFS500 is FAP10 compliant fingerprint device and can be used for the process of identification, verification and authentication that captures the fingerprint images in a faster and reliable manner.

At a Glance

Sensor Characteristics

Parameters	Specification
Fingerprint Sensor	: Optical Scratch Free Sensor
Image Resolution	: 500 DPI +/- 5 %
Platen Size	: 16 mm x 18.2 mm
Active Platen Size	: 16 mm x 18 mm
Image Size	: 316 x 354 Pixels
Image Grayscale	: 256 (8 - Bit Gray Level)
Image Capture Speed (Continuous)	: 15 FPS
Maximum Acquisition Time (Placement to Template)	: < 2 sec
Light Source	: RED LED
Approx Dimensions (L x W x H)	: 29 x 23 x 61
Approx Weight	: 0.026 Kg

Electrical Characteristics

Parameters	Specification
Operating Voltage	: 5V +/- 5% (USB Powered Device)
Operating Current (max)	: 85 mA
Stand by Current (max)	: 40 mA
Interface	: USB 2.0 (Std/OTG Supported)

Environmental Characteristics

Parameters	Specification
Operating Temperature	: 0 to 45 degC
Storage Temperature	: 0 to 50 degC
Humidity (Operating / Storage)	: < 90% RH, Non-condensing

Compliant to Following Standard

Parameters	Specification
Biometric Data Interchange Format	: ISO 19794-2 for minutiae & ISO 19794-4 for Image Template
Environmental, Health and Safety	: RoHS Certification
BIS	: IS 13252 (Part 1)
Safety	: IEC60950
EMI / EMC Compliance	: CE & FCC Class A
*FBI PIV Certification	: Compliance
*STQC Certification	: Yes
IP Rating	: IP54
Device Driver	: WHQL Certified with Unique Serial Number
OS Supports	: Win XP, Win 7, Linux (32 bit & 64 bit)

*Applied for certification